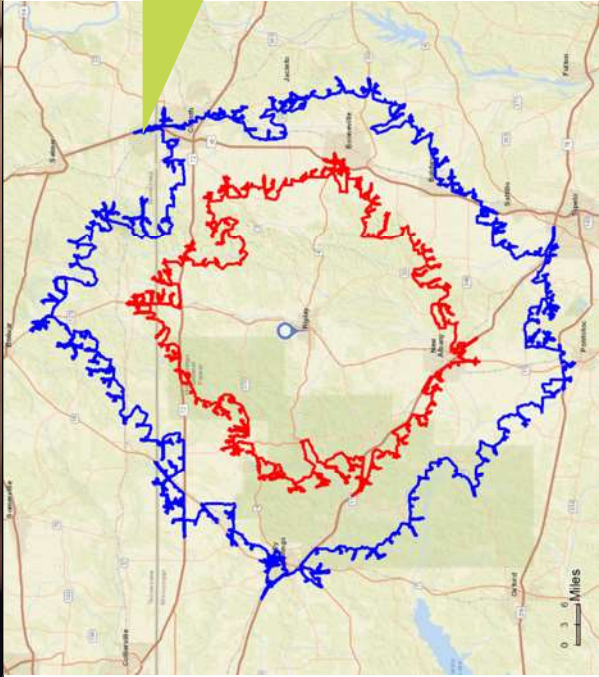
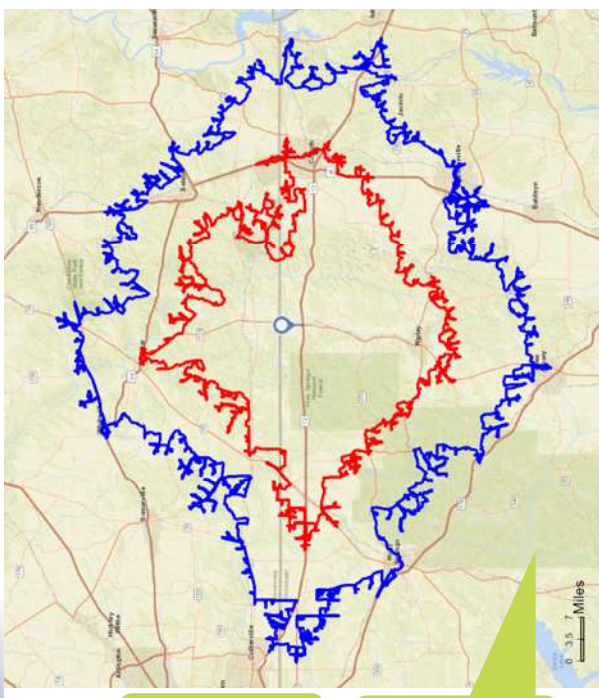


Tippah County is home to many industries, including manufacturing, agriculture, healthcare, education, and construction. The people who call Tippah County home are from a wide variety of social and economic backgrounds, but the one thing they hold in common is a strong work ethic. This diverse workforce has proven itself to be innovative and resilient enough to face any challenge.

The statistics below, based on employer and workforce zip codes, show that the average Tippah County employee drives 37.5 miles to work daily. These drive times show that a much greater workforce exists than can be calculated simply by using population data.



Drive Times for North Ripley Industrial Park



Drive Times for Walnut Industrial Park

TIPPAH COUNTY, MISSISSIPPI


— 30 Minute Radius
— 45 Minute Radius

North Ripley Industrial Park

Data for Area:	30 minutes	45 minutes
Total Businesses:	1,542	4,595
Total Employees:	15,687	56,802
Total Residential Population:	42,537	124,276
Employee/Residential Population Ratio:	0.37:1	0.46:1

Walnut Industrial Park

Data for Area:	30 minutes	45 minutes
Total Businesses:	1,999	4,629
Total Employees:	20,755	47,666
Total Residential Population:	45,747	129,667
Employee/Residential Population Ratio:	0.45:1	0.37:1

Graphs and Data Prepared by: 

WORKFORCE TRAINING

TIPPAH CAREER AND TECHNOLOGY CENTER



The Tippah Career and Technology Center provides workforce preparedness training through programs such as the Career Pathway Experience (CPE), which allows students to gain work experience, develop technology and communication skills, and strengthen development of core academic skills. Other programs offered include automotive construction technology, construction and carpentry, health sciences, information technology, law and public safety, manufacturing fundamentals, and metal fabrication. The center is designed to give students a hands-on approach to learning which provides a much needed skill set for entering the workforce upon graduation.

NORTHEAST MISSISSIPPI COMMUNITY COLLEGE WORKFORCE TRAINING

Northeast Mississippi Community College Division of Workforce Training and Economic Development offers non-credit programs specifically designed to meet the changing technical requirements for today's jobs. The department has a long-standing history of working with major industry partners. Through programs with business, government and community employers, local industry is able to receive the training needed to stay competitive in today's business world. Meanwhile the under- and unemployed can prepare for good paying positions through accelerated courses designed for and with employers.

More than 50 targeted skills workforce courses are offered through NEMCC Workforce to Northeast Mississippi citizens.

